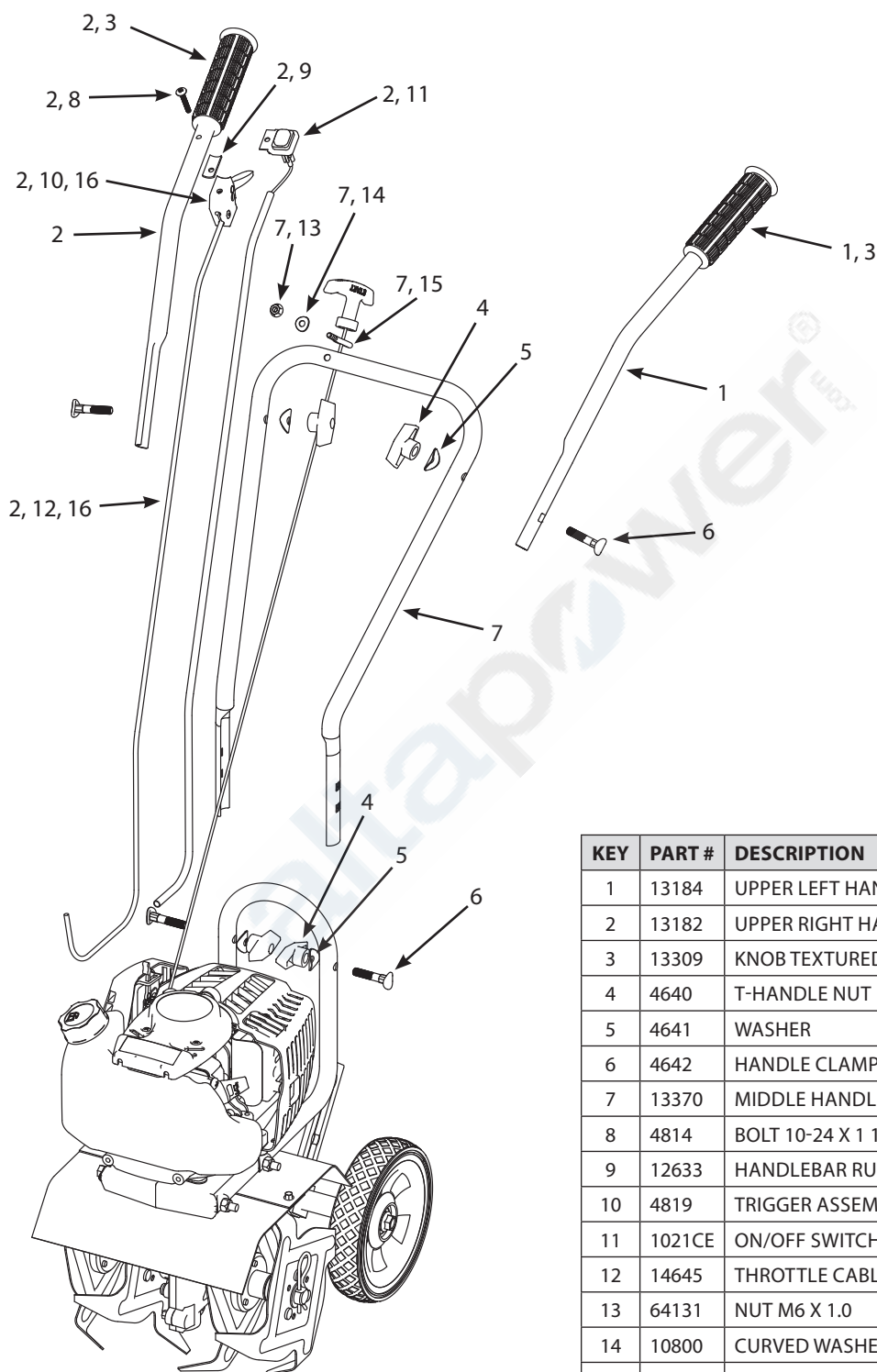


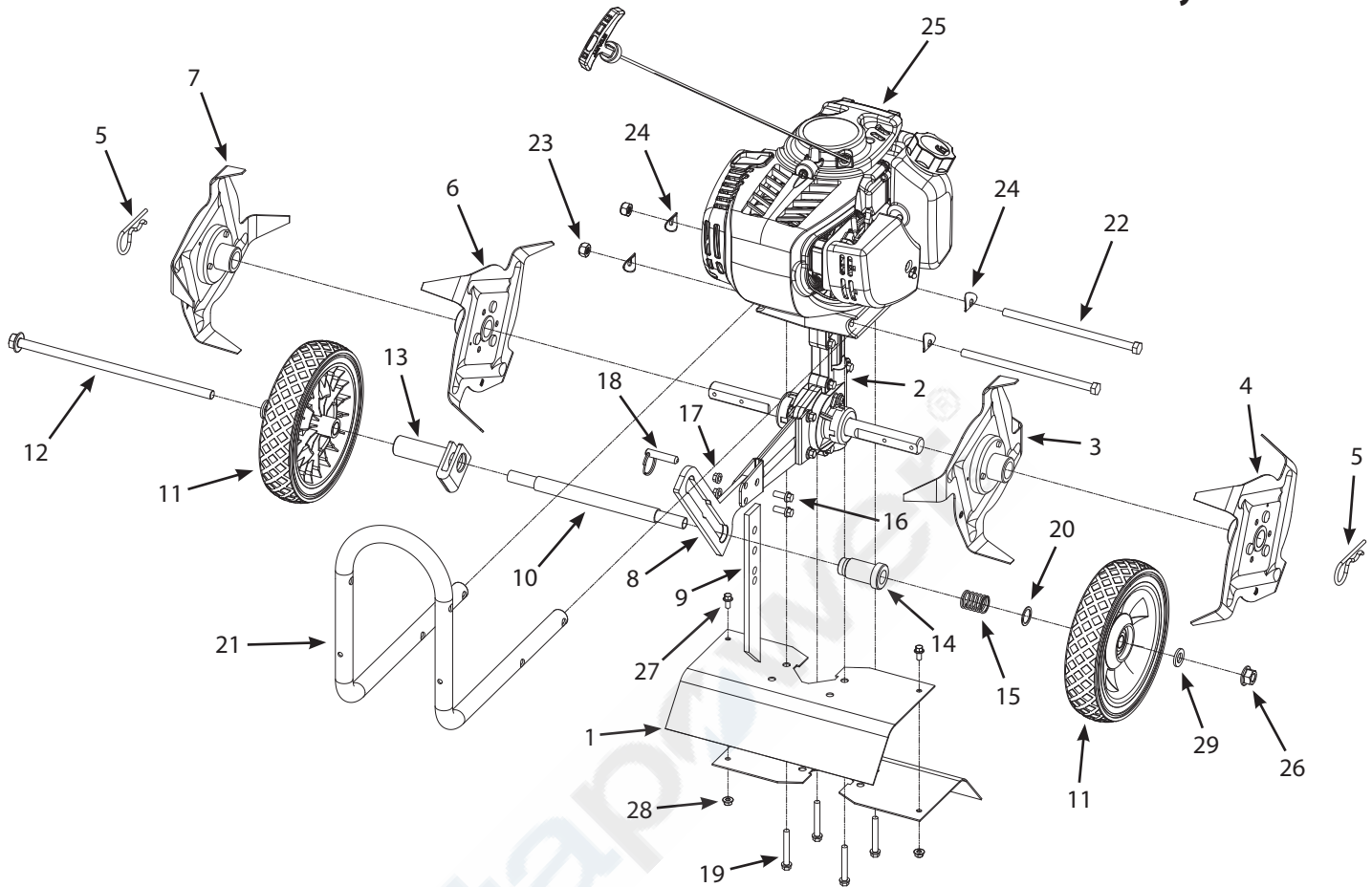
### HANDLEBAR PARTS EXPLOSION



KEY	PART #	DESCRIPTION	QTY.
1	13184	UPPER LEFT HANDLEBAR ASSEMBLY GREY	1
2	13182	UPPER RIGHT HANDLEBAR ASSEMBLY GREY	1
3	13309	KNOB TEXTURED HANDLE GRIP	2
4	4640	T-HANDLE NUT	4
5	4641	WASHER	4
6	4642	HANDLE CLAMP BOLT	4
7	13370	MIDDLE HANDLEBAR ASSEMBLY GREY	1
8	4814	BOLT 10-24 X 1 1/4	1
9	12633	HANDLEBAR RUBBER PAD 15MM X 28.5MM	1
10	4819	TRIGGER ASSEMBLY LONG	1
11	1021CE	ON/OFF SWITCH WIRE ASSY	1
12	14645	THROTTLE CABLE	1
13	64131	NUT M6 X 1.0	1
14	10800	CURVED WASHER M6	1
15	400025	EYEBOLT M6 X 12 X 25	1
16	13804	THROTTLE TRIGGER KIT WITH CABLE	1

## HOOD & TINES PARTS EXPLOSION

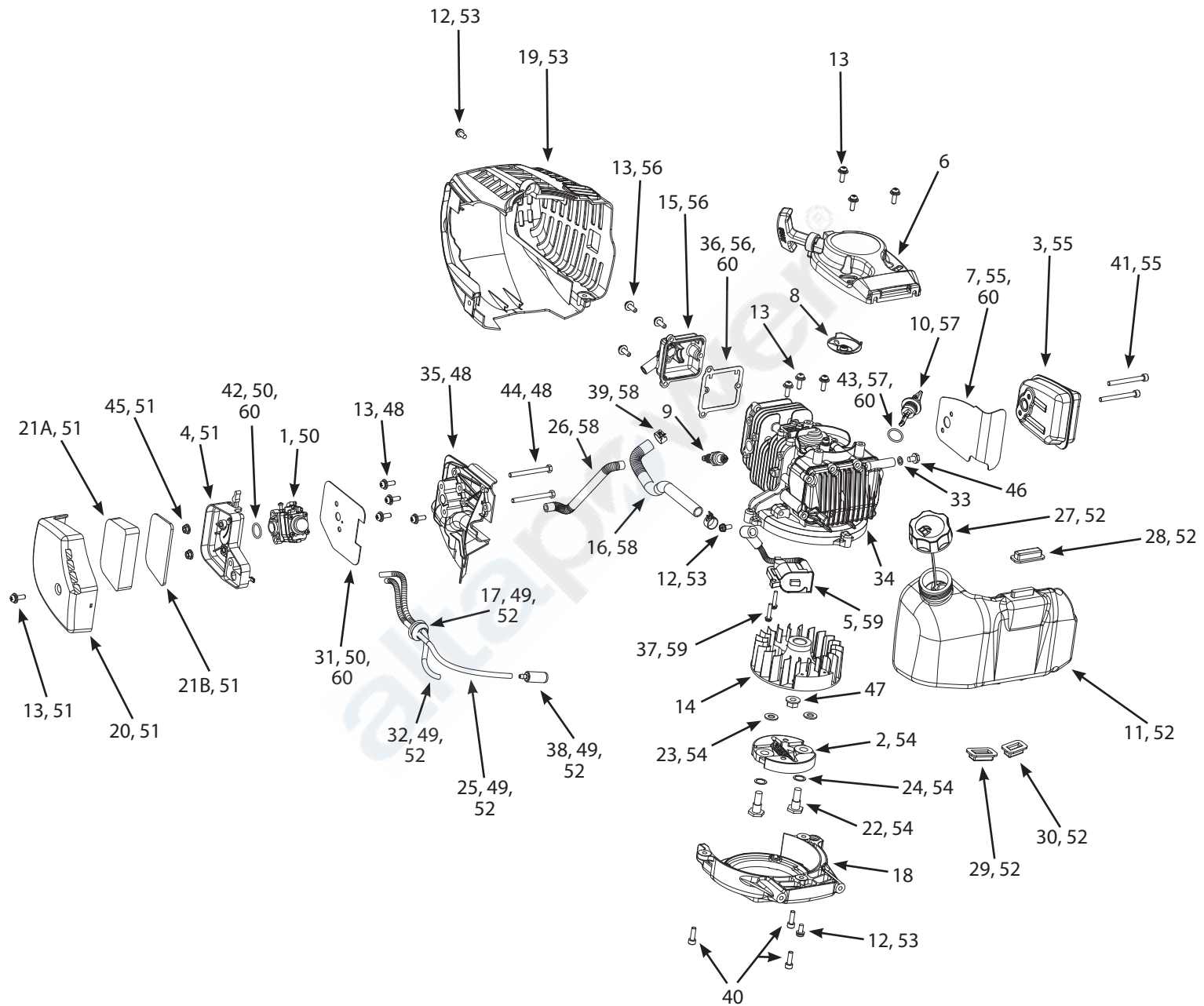
### MC440 4-Cycle Cultivator



KEY	PART #	DESCRIPTION	QTY.
1	46146	TINE SHIELD	2
2	46138	TRANSMISSION ASSEMBLY	1
3	4602	TINE -C- ASSEMBLY	1
4	4604	TINE -D- ASSEMBLY	1
5	4652	HAIRPIN 5/8-3/4	2
6	4603	TINE -B- ASSEMBLY	1
7	4601	TINE -A- ASSEMBLY	1
8	4673	WHEEL HOLDER	1
9	4600	DRAG STAKE	1
10	4674	TUBE WHEEL AXLE	1
11	13189	WHEEL 180 X 38MM DIAMOND TREAD GREY HUB	2
12	4687	BOLT M10 X 1.5 X 225 MM	1
13	4678	TUBE WHEEL GUIDE	1
14	4684	TUBE WHEEL LOCK	1
15	4685	SPRING WHEEL LOCK	1

KEY	PART #	DESCRIPTION	QTY.
16	46142	BOLT M6 X 1.0 X 20	2
17	4650	NUT M6 X 1.0	2
18	46145	PIN QUICK-RELEASE M8 X 25	1
19	4625	BOLT M6 X 1.0 X 42 FLANGE	4
20	13230	WASHER 21MM X 16MM X 1MM	1
21	12811	LOWER HANDLEBAR	1
22	46141	BOLT M8 X 1.25 X 160MM	2
23	400023	NUT M8 NYLOCK	2
24	4641	CURVED WASHER M8	4
25	11614	ENGINE 40CC 4 CYCLE OHV	1
26	13048	NUT M10 X 1.5	1
27	176	BOLT M5 X 0.8 X 10	2
28	400020	NUT M5 X 0.8 TOPLOCK	2
29	2431	FLAT WASHER M10 X 20 X 2	2

### ENGINE PARTS EXPLOSION



## ENGINE PARTS LIST

KEY NO.	PART NO.	DESCRIPTION	QTY.
1	13192	CARBURETOR	1
2	300413	ASSY CENTRIFUGAL CLUTCH ROTOR VIPER	1
3	13200*	MUFFLER	1
4	13238	INTAKE BASE ASSEMBLY	1
5	13242*	IGNITION COIL	1
6	13194	RECOIL ASSEMBLY	1
7	13202*	HEAT SHIELD MUFFLER	1
8	13244	RECOIL CLUTCH	1
9	13243	SPARK PLUG NGK CMR6A	1
10	13196*	OIL CAP	1
11	13195	GAS TANK	1
12	300471	BOLT WITH WASHER M5 X 0.8 X 12MM	3
13	10887	BOLT M5 X 0.8 X 16MM PPH W/ WASHER	14
14	13241	FLYWHEEL	1
15	13321*	VALVE COVER	1
16	13317*	HOSE VALVE COVER BREATHER	1
17	300494	GROMMET FUEL TANK TWO HOLE	1
18	13239	MOUNT RING AND SHROUD	1
19	13193*	SHROUD ENGINE	1
20	13197	AIR FILTER COVER	1
21A	13198	AIR FILTER	1
21B	17078	AIR FILTER FIBER	1
22	300450	BOLT M8 X 1.25 X 25MM SHOULDER 10MM	2
23	300462	WASHER 15.8 X 8.4 X 1.6MM	2
24	300449	WASHER M8 SPRING	2
25	13306	FUEL LINE CUT TO 275MM	1
26	13318*	CRANKCASE BREATHER	1
27	13352	GAS CAP COMPLETE 4 CYCLE EPA SELF VENT	1
28	13295	RUBBER GAS TANK HOLDER TOP	1
29	13296	RUBBER TANK HOLDER BOTTOM LEFT	1
30	13297	RUBBER TANK HOLDER BOTTOM RIGHT	1
31	13299*	CARBURETOR GASKET	1

\* Available as Kit only.

## MC440 4-Cycle Cultivator

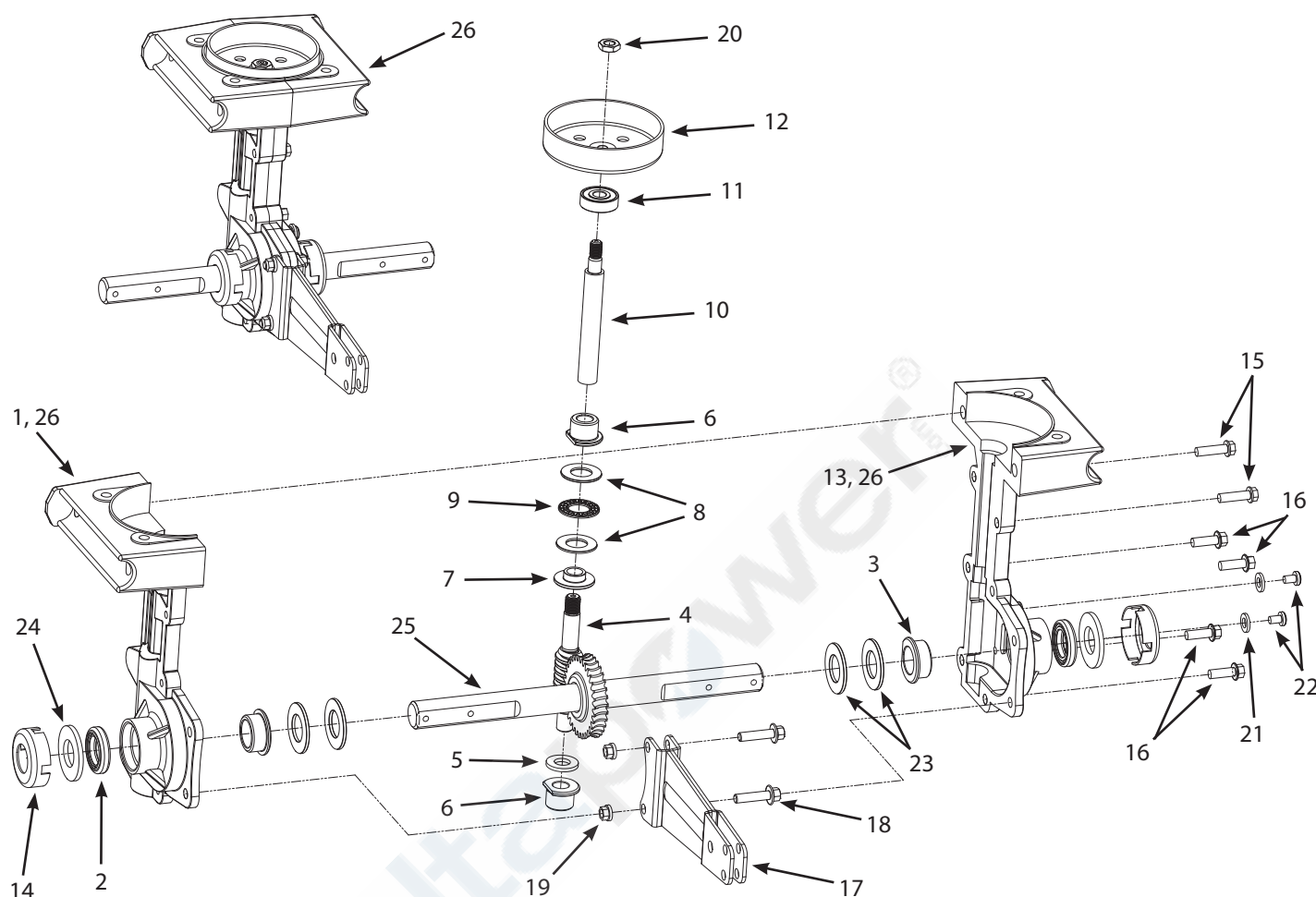
KEY NO.	PART NO.	DESCRIPTION	QTY.
32	13307	FUEL LINE CUT TO 195MM	1
33	13320	WASHER M6 X 10MM X 1MM	1
34	13322	ENGINE BLOCK	1
35	13328	CARBURETOR INSULATOR	1
36	13324*	GASKET VALVE COVER	1
37	13325	BOLT M4 X 0.7 X 20MM PPH WITH WASHER	2
38	3004103	FUEL FILTER POROUS PLASTIC ALUMINUM CORE	1
39	13395*	HOSE CLAMP 13.5MM	2
40	W1200123	BOLT M5 X 0.8 X 16	3
41	13181	BOLT M5 X 0.8 X 50MM	2
42	13330*	O-RING 15 X 18.6 X 1.8MM	1
43	13392*	O-RING 15.6 X 19.16 X 1.78MM	1
44	13332	BOLT M5 X 0.8 X 55	2
45	400020	NUT M5 X 0.8 TOPLOCK HHF GR 8.8	2
46	13449	BOLT M6 X 1.0 X 8MM X 12MM	1
47	300337	NUT M8 X 1.25MM	1

## ENGINE PART KITS LIST

KEY NO.	PART NO.	DESCRIPTION	QTY.
48	13390	CARBURETOR BRACKET KIT	1
49	13308	FUEL LINES KIT	1
50	13329	CARBURETOR KIT	1
51	13363	AIR FILTER KIT	1
52	13388	GAS TANK KIT WITH FUEL LINE	1
53	13389	ENGINE SHROUD KIT	1
54	11235	CLUTCH KIT 76.76MM OD VIPER	1
55	13391	MUFFLER KIT	1
56	13298	VALVE COVER KIT	1
57	13393	OIL CAP KIT WITH O-RING	1
58	13394	BREATHER HOSES KIT	1
59	13400	IGNITION COIL KIT	1
60	13066	GASKETS KIT	1



### TRANSMISSION PARTS EXPLOSION



KEY	PART #	DESCRIPTION	QTY.
1	46136*	MC LOWER TRANSMISSION CASTING LEFT	1
2	4646	SEAL SHAFT 19MM SHAFT 32MM BORE	2
3	4645	BUSHING M19 ID X 25.5OD D-PROFILE FLANGE	2
4	4613	WORM	1
5	4616	SPACER BUSHING 22 X 11.05 X 2.413MM	1
6	4614	BUSHING M11 ID X 19OD D-PROFILE FLANGED	2
7	4617	THRUST REDUCER BEARING M11 X 15OD FLANGE	1
8	4618	THRUST WASHER 28 X 15 X 1.5MM	2
9	4619	THRUST BEARING 28 X 15 X 2MM	1
10	46137	DRIVE SHAFT	1
11	4623	BALL BEARING 9MM X 26MM DOUBLE SEALED	1
12	300414	CLUTCH DRUM ASSEMBLY 77.7MM	1
13	46135*	MC LOWER TRANSMISSION CASTING RIGHT	1

KEY	PART #	DESCRIPTION	QTY.
14	46144	DUST CAP	2
15	4648	BOLT M6 X 1.0 X 22 FLANGE	2
16	4647	BOLT M6 X 1.0 X 18 FLANGE	4
17	4633	WHEEL AND DRAG MOUNT	1
18	4649	BOLT M6 X 1.0 X 25	2
19	4650	NUT M6 X 1.0	2
20	4620	NUT M8 X 1.25	1
21	W1200117	FLAT WASHER M6 X 13 X 1.75	2
22	13447	BOLT M6 X 1.0 X 8MM	2
23	4610	SHIM TINE SHAFT 35MM X 19MM X 2.2MM	4
24	4606	FIBER WASHER 38 X 19 X 3.2MM	2
25	4651	SHAFT TINE ASSEMBLY	1
26	46138	TRANSMISSION ASSEMBLY	1

\* Available as Assembly or Kit Only

## 15073 BORDER-EDGER KIT INSTALLATION (OPTIONAL ACCESSORY)

MC440 4-Cycle Cultivator

The Border-Edger Kit is a useful tool for making clean cuts in the lawn along the borders of gardens, flower beds, walkways, and driveways for a well manicured look. To install the Border-Edger Kit, do the following:

### INSTALLATION

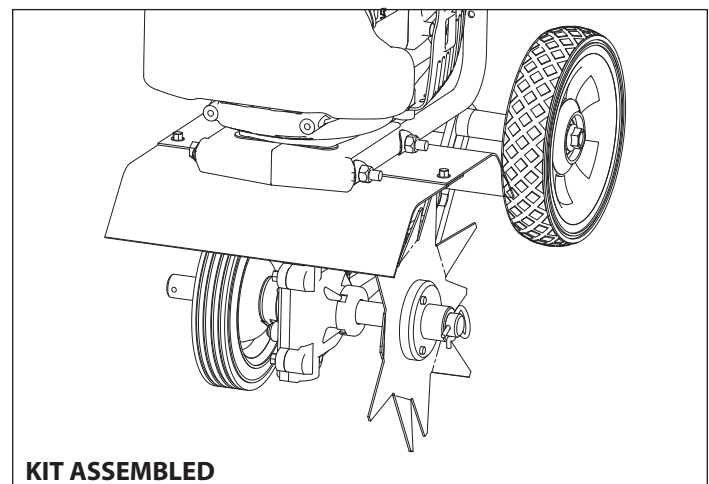
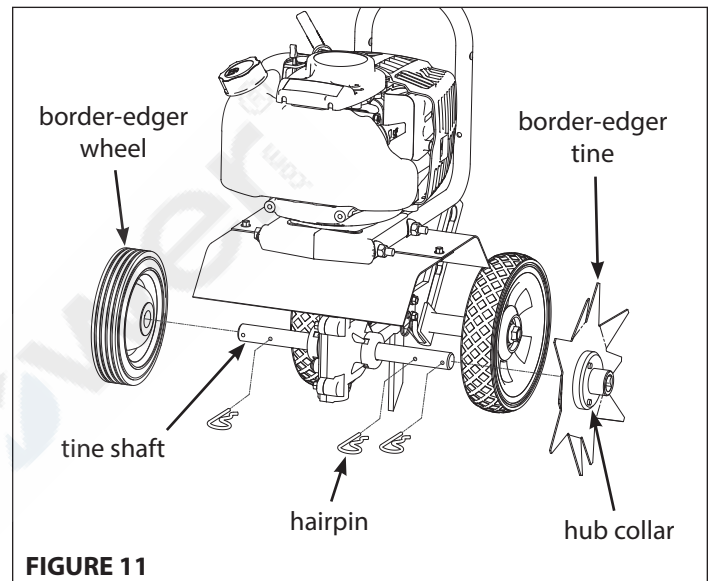
1. Make sure the cultivator is not running by flipping the ON/OFF switch to the **OFF** position.
2. Remove the hairpins from both sides of the tine shaft.
3. Remove the cultivating tines from the shaft, remembering which direction they are facing.
4. Put the tines in a safe place and save the (2) hairpins, they will be used on the Border-Edger Kit.
5. Slide the border-edger tine onto either side of the tine shaft. Make sure that the hub collar of the border-edger tine faces outward, away from the transmission of the cultivator. **SEE FIGURE 11**
6. Take the (2) hairpins saved in *Step 4* and insert them through the inner and outer holes in the tine shaft on each side of the border-edger tine to secure the tine blade in place on the shaft. **SEE FIGURE 11**
7. Slide the border-edger wheel onto the opposite side of the tine shaft as far as it will go.
8. Insert the remaining (1) hairpin, that came with the kit, through the inner hole next to the wheel in the middle of the tine shaft. **SEE FIGURE 11**
9. Before using the Border-Edger Kit, remove the drag stake from the unit.
10. Set the cultivator wheels to the **HIGHEST** (top) position.

### PARTS BREAKDOWN

KEY #	PART #	DESCRIPTION	QTY.
1	15009	BORDER-EDGER TINE	1
2	46131	BORDER-EDGER WHEEL	1
3	46134	HAIRPIN	1

### CAUTION

**BE AWARE THAT THE CULTIVATOR COULD UNEXPECTEDLY BOUNCE UPWARD, OR JUMP FORWARD IF THE TINES STRIKE CONCRETE, PAVEMENT, OR OTHER HARD SURFACES OR HARD OBSTACLES BURIED UNDER GROUND.**

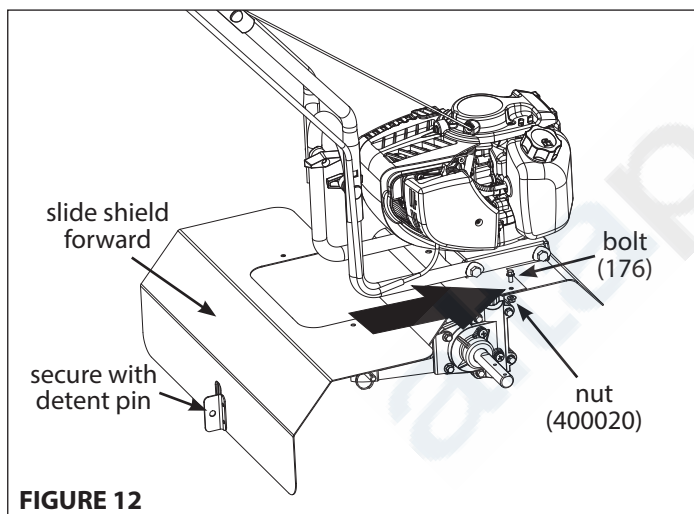


### DK43 DETHATCHER KIT INSTALLATION (OPTIONAL ACCESSORY)

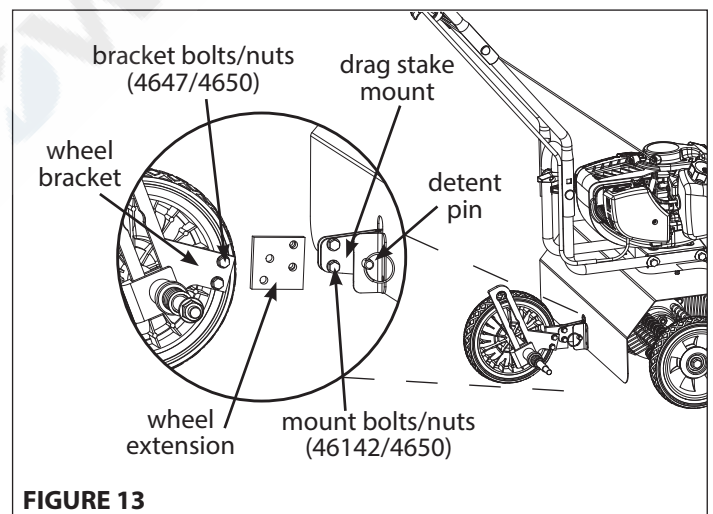
The Dethatcher Kit is very effective for lifting away the excessive matted layers of thatch that can prevent moisture, oxygen and nutrients from penetrating the soil and can harbor disease and insects. Use in Spring, Summer, and Fall to bring life and color back to your lawn.

1. Flip the ON/OFF switch to the **OFF** position. Remove the cultivating tines and the drag stake (SEE PAGE 12).
2. Unscrew mount bolts/nuts that connect the wheel bracket to the drag stake mount and set wheel bracket aside. **SEE FIGURE 13**
3. Slide dethatcher shield over the unit's tine shield from the rear of the unit and secure using bolts (176) and nuts (400020). **SEE FIGURE 12**
3. Secure the lower part of the dethatcher shield to the drag stake mount using the detent pin (46145).
4. Install wheel extension plate (4676) using additional bolts (46142) and nuts (4650). Make sure wheel extension is facing the right direction. (The side, with the two holes flush to the edge, connects to the drag stake mount) **SEE FIGURE 13**
  - a. With the mount bolts/nuts attach the wheel extension to the drag stake mount.
  - b. Then with the bracket bolts/nuts (included with the Dethatcher Kit) attach the wheel bracket to the wheel extension.
5. Slide the Left and Right Dethatcher Assemblies onto the tine shaft making sure the Right Assembly is installed on the right side and Left Assembly is installed on the left side as defined from the user's position. **SEE FIGURE 14**
6. Secure dethatcher assemblies using the hairpins (4652). The hairpins go through the inner holes of the tine shaft.

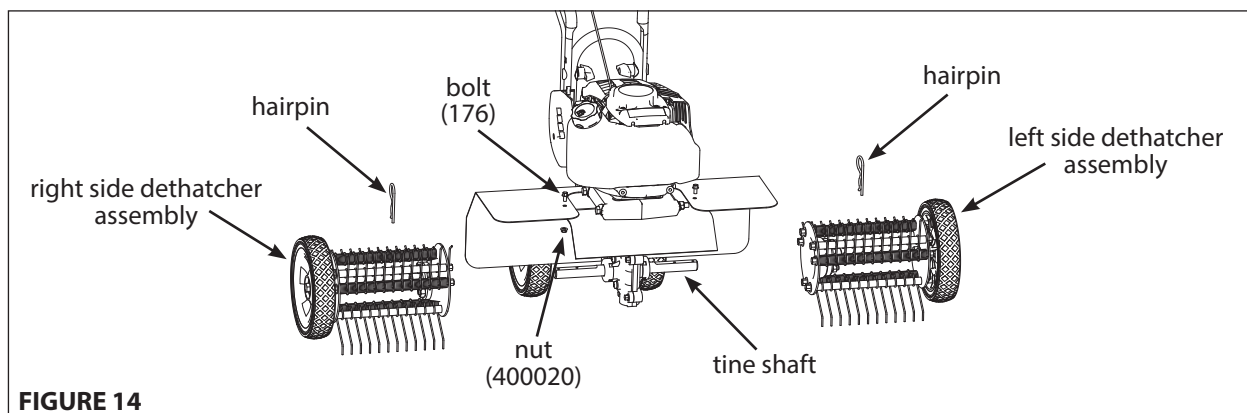
**NOTE: The drag stake should not be used when using the dethatcher kit.**



**FIGURE 12**



**FIGURE 13**



**FIGURE 14**